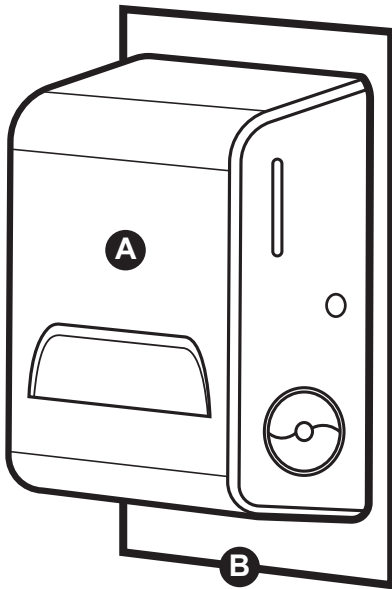


**IMPORTANT! For secure mounting, follow instructions thoroughly.**



**Rough Wall Opening:**

**11 1/8" Wide**

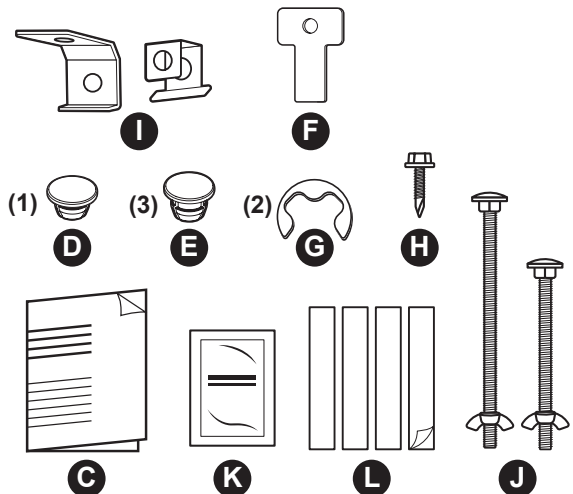
**15 3/8" High**

**4" Minimum Depth**

**Materials Required:**

- Tape measure
- Installation screws (4 – 2.5" 8 gauge)
- Installation screws (4 – 2.0" 8 gauge)
- Drill
- Hammer
- Pliers
- Screwdriver
- Pry tool
- Pin Punch, small diameter
- Masking tape
- Level
- Rubber mallet
- File
- Extra double-sided tape
- Packing or Masking tape
- 3ft of metal or plastic strapping
- 5/8" flat washer

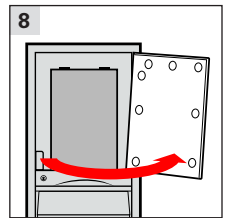
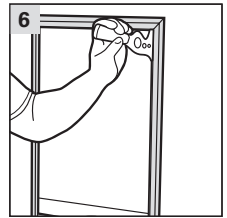
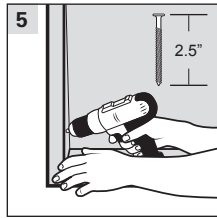
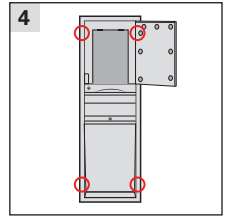
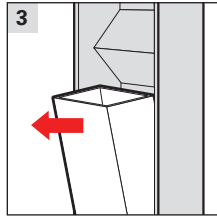
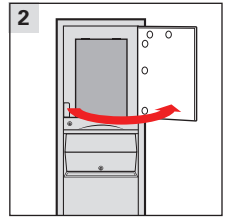
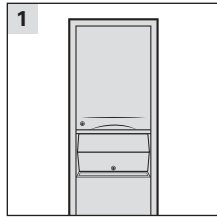
- A** Door
- B** Back Housing
- C** Instructions
- D** Silver Core Plug
- E** Black Swing Arm PluG
- F** Key
- G** Retaining Clips
- H** Hex Head
- I** Angle Brackets
- J** Carriage Bolts
- K** Alcohol Pad
- L** 4 Strips VHB Tape



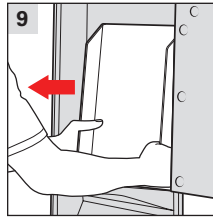
# Converting Stainless Steel Folded Towel Unit to Stainless Steel Rolled Towel Unit

## INSTALLATION INSTRUCTIONS

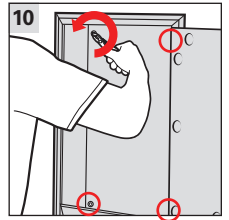
- 1** These instructions are for converting an existing stainless steel folded towel dispenser with a trash can unit to a recessed hard roll towel dispensing system. **(Figure 1)**
- 2** Locate the key and open the door to the folded towel dispenser. **(Figure 2)**
- 3** Now open the trash can lock and remove the trash can part of the installed wall unit. Set it aside as it will be used again. **(Figure 3)**
- 4** Determine how the system is installed in the current location. Determine where the screws are located and ensure that the system is properly secured. **(Figure 4)**
- 5** Note that trash can system needs to be securely installed. Use 2.5 inch screws to tighten the install if needed to provide a secure install. **(Figure 5)**
- 6** With the door closed and locked to the towel dispenser, take the pry tool and insert in between the back recessed housing and the door as shown. **(Figure 6)**
- 7** With a hammer pound the pry tool down the side of the towel dispenser. **(Figure 7)**
- 8** When this process is completed unlock, open the door and inspect. This process will have loosened the hinge system of the folded towel dispenser. **(Figure 8)**



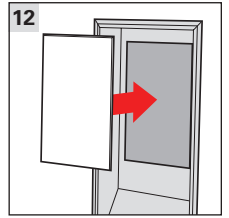
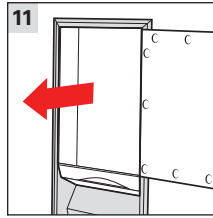
**9** Now remove the black folded towel holder, this can be discarded. **(Figure 9)**



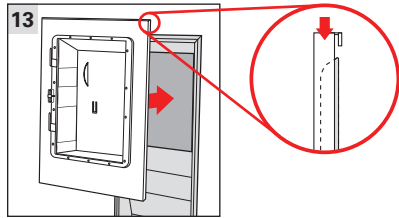
**10** Find the hex head screws used to secure the folded towel system to the wall and remove them. Typically, there are 4 screws, two on the back housing at the top and two on the bottom. We have found that it is easiest to use pliers to remove the hex head screws. **(Figure 10)**



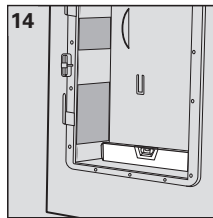
**11** After all the screws are removed, grasp the towel system where the folded towels would exit the dispenser and, on the door, and pull and twist until the system pops out of the housing. **(Figure 11)**



**12** Once the folded towel dispenser is removed, note that there is no backing where the new dispenser will be installed. If installed in an air shaft, the opening will need to be covered. This can be completed by cutting the box that the new dispenser came in to cover the hole or use another suitable material to cover the open area. **(Figure 12)**



**13** Now take the KIMBERLY-CLARK PROFESSIONAL™ SCOTT PRO STAINLESS STEEL RECESSED DISPENSING SYSTEMS Code: 43823 and install it in the area where the folded towel dispenser was located. This dispenser has a lip on top and it is important to place the lip over the top of the housing still left in the wall as shown. **(Figure 13)**



**14** Place a level in the bottom of the dispenser to ensure that the placement is level. **(Figure 14)**

Determine the method you wish to use and follow the instructions.

## FOR CARRIAGE BOLT METHOD OF INSTALLATION

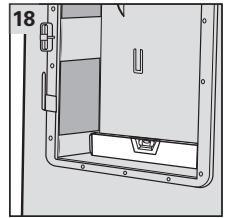
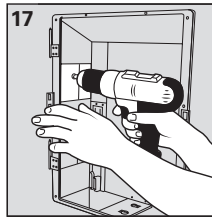
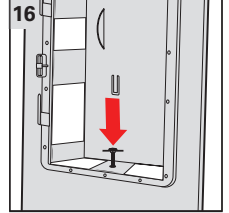
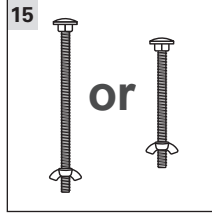
There are two methods of installation that can be used for this dispenser, the carriage bolt method and the strapping method. The **carriage bolt method** is detailed in steps 15 through 18. The **strapping method** is detailed in steps 19 through 26.

**15** Take the carriage bolts and the angle brackets that came with the dispenser and determine whether the longer or the shorter one is needed for the install. (Figure 15)

**16** Install the carriage bolt and angle bracket that works best for the install at the bottom of the dispenser where there are holes for the carriage bolts and angle brackets to be installed. (Figure 16)

**17** Next install the 2" installation screws in the side housing of the dispenser, one on each side. Now skip to Step 27. (Figure 17)

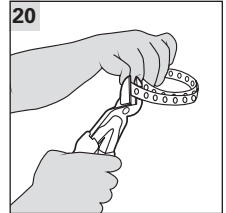
**18** Check the level once again and ensure the system is secure. (Figure 18)



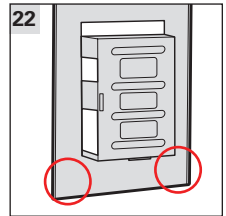
## FOR STRAPPING METHOD OF INSTALLATION

Follow instructions in steps 1-14 and skip to step 19 for the strapping method.

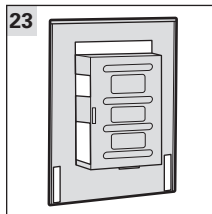
- 19** Take the type of strapping preferred and measure a piece the size of the dispenser opening. Add extra to each side to be able to fold over the edges. **(Figure 19)**



- 20** Use metal or plastic strapping to secure the dispenser in place. Cut the strapping with snips to the size desired fold over the edges on each side. **(Figure 20)**

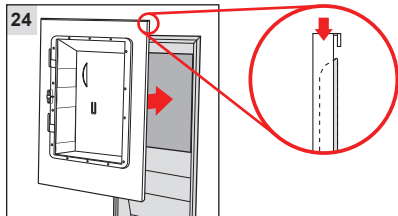


- 21** Using the 2" installation screw, screw both ends of the strapping to the bottom of the housing that is in the wall. **(Figure 21)**



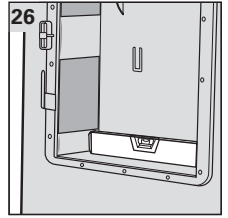
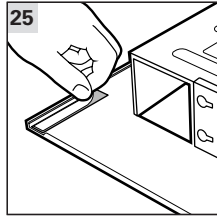
- 22** Take the housing frame for the dispenser to be installed and turn it over. Using the alcohol pads, clean the bottom corners and allow to air dry for 15 minutes. **(Figure 22)**

- 23** Once the area is dry, place the VHB tape on each bottom corner. Note if one or two strips will be needed for your install. Apply the tape to the dispenser and leave the cover on the top piece of tape. **(Figure 23)**

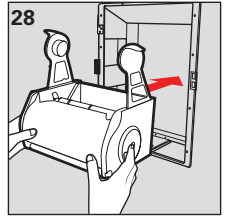
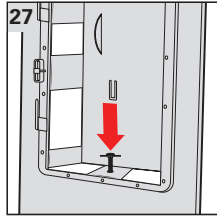


- 24** Now take the KIMBERLY-CLARK PROFESSIONAL™ SCOTT PRO STAINLESS STEEL RECESSED DISPENSING SYSTEMS Code: 43823 and install it in the area where the folded towel dispenser was located. This dispenser has a lip on top and it is important to place the lip over the top of the housing still left in the wall as shown. **(Figure 24)**

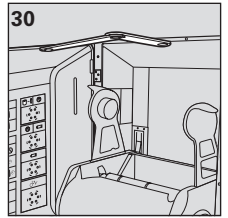
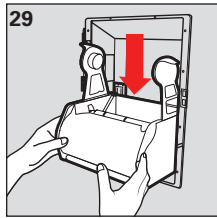
**25** Place a level in the bottom of the dispenser to ensure that the placement is level. Carefully remove the cover on the tape on back of housing. (Figure 25 & 26)



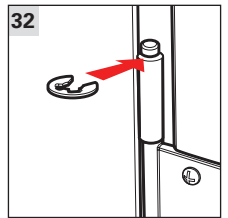
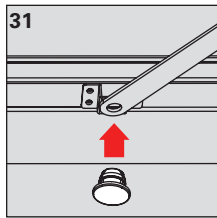
**26** Press sides firmly. Using one of the carriage bolts and a 5/8 inch flat washer, tighten the dispenser to the strap. (Figure 27)



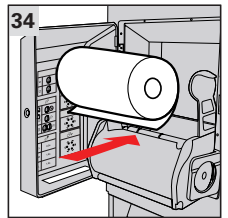
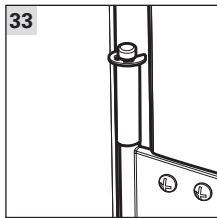
**27** Now install the module. Install the module by lining up the guides on the back of the back housing and push down gently to click the module in place. For more details on module installation see [www.kcp.com](http://www.kcp.com) and search for this dispenser code. (Figure 28 & 29)



**28** Install the door. The swing arm is taped to the back housing, remove tape and install the swing arm by using the black plug that came with the dispenser into the cover. This prevents the door from sagging. (Figure 30 & 31)

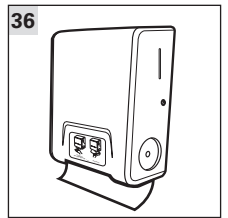
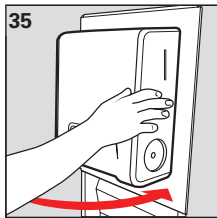


**29** Add the retaining rings commonly known as "c" clips on the hinges for the door to keep the cover in place. (Figure 32 & 33)



**30** Add paper to the module. (Figure 34)

**31** Close the door. (Figure 35)



**32** Add the use label to the front cover. (Figure 36)

*When using a power adapter please use KC adapter 51224 (5.9v). Ensure that incoming voltage does not exceed 6.5 volts.*